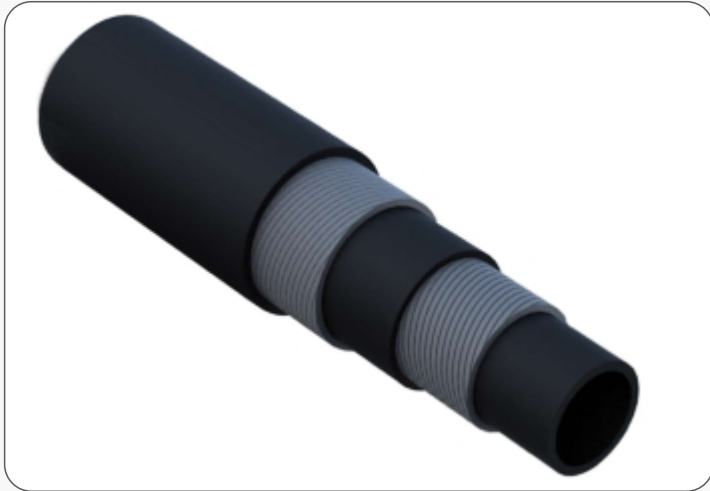


# HOT WATER HOSE



## Structure:

Inner Tube - Heat Resistant Synthetic Rubber

Reinforcement - Textile plies

Outer Cover - Abrasion and weather resistant Rubber. Fabric impression.

## Applications:



Hot water for Industries

## Temperature range:

-30°C to + 100°C

## Standards

IS 5821/79

 int mm	 w.p.bar	 b.p.bar	 mtr
12.50	7	21	100
20.00	7	21	5
25.00	7	21	5
31.00	7	21	5
38.00	7	21	5
50.00	7	21	40
63.00	7	21	40
75.00	7	21	40